

FILED FOR RECORD: 8-14-1978 at 4:07 o'clock P M  
DULY RECORDED: 9-21-1978 at 9:00 o'clock A M  
INSTRUMENT NO. \_\_\_\_\_ GRACE BOSTICK, TYLER CO. CLK.  
BY W. Bostick Deputy

TYLER COUNTY COMMISSIONER'S COURT  
REGULAR MEETING  
AUGUST 14, 1978-----10:00 A.M.

Vol 4 Pg 625

The Regular Meeting of the Commissioner's Court, met on Monday August 14, 1978 at 10:00 A.M. All members being present. The meeting was opened with prayer by Commissioner James R. Jordan.

A motion was made by Commissioner Fowler and seconded by Commissioner Riley to table the Bids on the Tax Office Building, until August 15, 1978. All voted yes and none no.

A motion was made by Commissioner Jordan and seconded by Commissioner Riley to accept the Plat and Contract from Mosbacher Production Co. Houston, Texas 77002 for a Pipeline Easement in Pct. #4. All voted yes and none no. See attached.

A motion was made by Commissioner Riley and seconded by Comm. Fowler to give permission to the Airport Committee, to present a Tyler County Air Show, on Oct. 14 or Oct. 21, 1978. All voted yes and none no.

A motion was made by Commissioner Fowler and seconded by Comm. Lowe to approve the County Treasurer's Monthly Report. All voted yes and none no. See attached.

A motion was made by Commissioner Fowler and seconded by Comm. Riley to approve the County Extension Monthly Report. All voted yes and none no.

A motion was made by Commissioner Riley and seconded by Comm. Lowe to adopt the following order; That the refund of \$28,193.70 to Tyler County, and upon receipt, will be used for Construction and Maintenance of County Lateral Roads and Bridges. It is a request of the Commissioner's Court, that these funds be returned to Tyler County. All voted yes and none no. See attached.

A motion was made by Commissioner Riley and seconded by Comm. Lowe to give permission to Terry Watts. for a Terminal Building to be built, but it must meet Airport Specifications. All voted yes and none no.

A motion was made by Commissioner Riley and seconded by Comm. Jordan to appoint County Judge Allen Sturrock to serve as a Board Member on the MHMR Board of Directors. This will be for a period of two years. All voted yes and none no.

Commissioner Fowler made the motion which was seconded by Comm. Lowe to set the Tax Ratio of Assessment to 35%. All voted yes and none no.

A motion was made by Commissioner Lowe and seconded by Comm. Fowler to solicit Bids for Air Conditioners for the downstairs offices. All voted yes and none no.

A motion was made by Commissioner Riley and seconded by Comm. Lowe to approve the Grant, for Tyler County Jail personnel. All voted yes and none no.

Vol 4 Pg 626

There being no further business, the meeting adjourned.

SIGNED: Allen Sturrock Allen Sturrock, County Judge

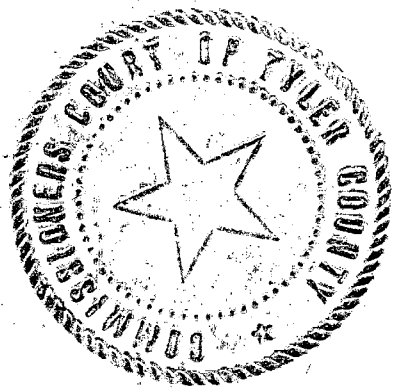
Maxie Riley Maxie Riley, Comm. Pct. #1

H.K. Lowe H.K. Lowe, Comm. Pct. #2

Leon Fowler Leon Fowler, Comm. Pct. #3

James R. Jordan James R. Jordan, Comm. Pct #4

ATTEST: Grace Bostick Grace Bostick, County Clerk





TREASURY DEPARTMENT

STATE OF TEXAS  
P. O. BOX 12608, CAPITOL STATION  
AUSTIN, TEXAS 78711

WARREN G. HARDING  
TREASURER

July 20, 1978

*Vol 4 Pg 627*

*Set on agenda Reg  
your request  
meeting  
8-14-78*

Hon. Allen Sturrock  
County Judge  
Tyler County  
Woodville, Texas 75979

Dear Sir:

On September 1, we will credit your lateral road account with \$ 28,193.70 which represents your county's share of the Lateral Road Fund as of August 31.

This amount will be forwarded to your county to be used for the construction or improvement of your county lateral roads. Prior to forwarding your county's portion of the Lateral Road Fund, it is required by statute that we receive from you an order of your Commissioners' Court requesting that we return these funds to your county and a statement contained therein indicating the purpose for which these funds will be used.

Yours very truly,

*Warren G. Harding*  
Warren G. Harding  
State Treasurer

WGH:WK:snm

Mosbacher Production Co.  
2100 Capital National Bank Building  
1300 Main Street  
Houston, Texas 77002

Vol 4  
Pg 628

August 4, 1978

Telephone  
713 654-0100

Commissioner James R. Jordan  
Precinct #4  
100 Courthouse  
Woodville, Texas 75979

Dear Commissioner Jordan:

Mosbacher Production Company has recently established gas-condensate production in the West Hicksbaugh Area of Tyler County, Texas. Gas production from this field will be sold to Atlantic Richfield Company. Delivery point will be to an existing ARCO line approximately 4700' southwest of ARCO, Theuvenins Creek compressor booster station.

Sir, we as Operator are requesting permission to lay a gas pipe line in county road ditch from wells in West Hicksbaugh Field to ARCO tie-in point.

A survey is being prepared at this time and will be submitted to your office prior to August 14, 1978.

The line will follow Tripple D Road, Pineville Road and Tom Nelson Road and will cross Turkey Creek and Theuvenins Creek.

#### Pipe Line Specifications

1. 2" .154 Wall 3.65# API-SL Seamless Pipe
2. 3" .216 Wall 7.58# API-SL Seamless Pipe
3. Welded Construction - to API-1104 Welding Code
4. Hydrostatic Test Pressure - 1400 psi.
5. Operating Pressure - 800 psi.
6. Pipe Line Ditch Depth 3'.
7. All County Road Crossings Cased-Vented.
8. Creek Crossing cased-vented and buried 3' below the existing stream bottom.

#### Pipe Line Laying Operation

1. Pipe Line Ditch will be dug in road ditch.
2. Line will be welded out prior to ditching.
3. Line will be placed in ditch directly behind ditching machine.
4. Ditch will be closed as soon as pipe is placed in ditch.
5. When pipe line crosses county road, road will be blocked off for no more than thirty (30) minutes.
6. County Road will remain open to traffic at all times during construction.

Cont'd. on Pg. 2

August 4, 1978

Vol 4 Pg 629

Pipe Line Laying Operation (Cont'd.)

7. Road, road ditches and drain cuts will be returned to normal as line is laid.
8. All construction equipment will be removed from county road during night.
9. Any open ditch will be properly barricaded and lighted during the night.
10. Drive or entry ways into property will be returned to normal immediately after pipe is placed in ditch.
11. The road will be cleaned of all debris related to pipeline construction.

Commissioner, every effort will be made not to impede traffic on county roads. All work will be done in a safe workmanlike manner. The Pipe Line Contractor will have a Spread Foreman at the job site at all times, and a Mosbacher representative will be on location daily.

Inspection by county people is invited any time during construction. After the job is completed, it is requested that a joint inspection be made with county contractors and Mosbacher representatives. Also it is requested sixty (60) days after job completion that another inspection be conducted to assure that all is returned to a pre-pipe line normal.

Very truly yours,

MOSBACHER PRODUCTION COMPANY

*Willie O'Brien*

Willie O'Brien  
Engineer

WO:lj

Vol. 4  
Pgs. 630 thru 633

T. & N. O. RR.  
A - 646

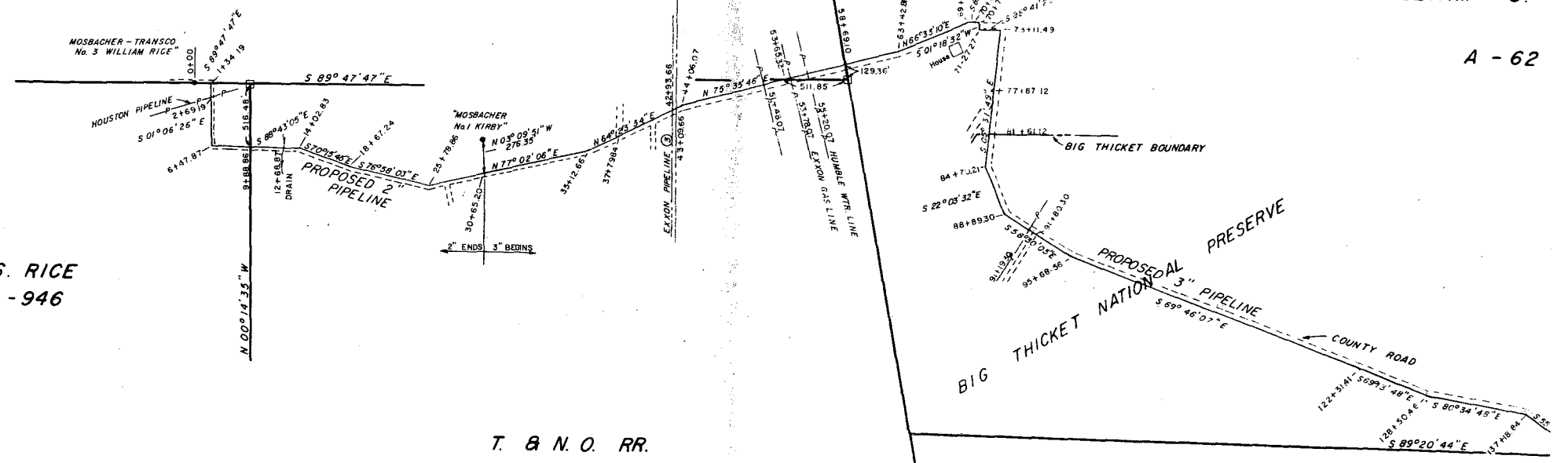
J. S. RICE  
A - 946

T. & N. O. RR.  
A - 807

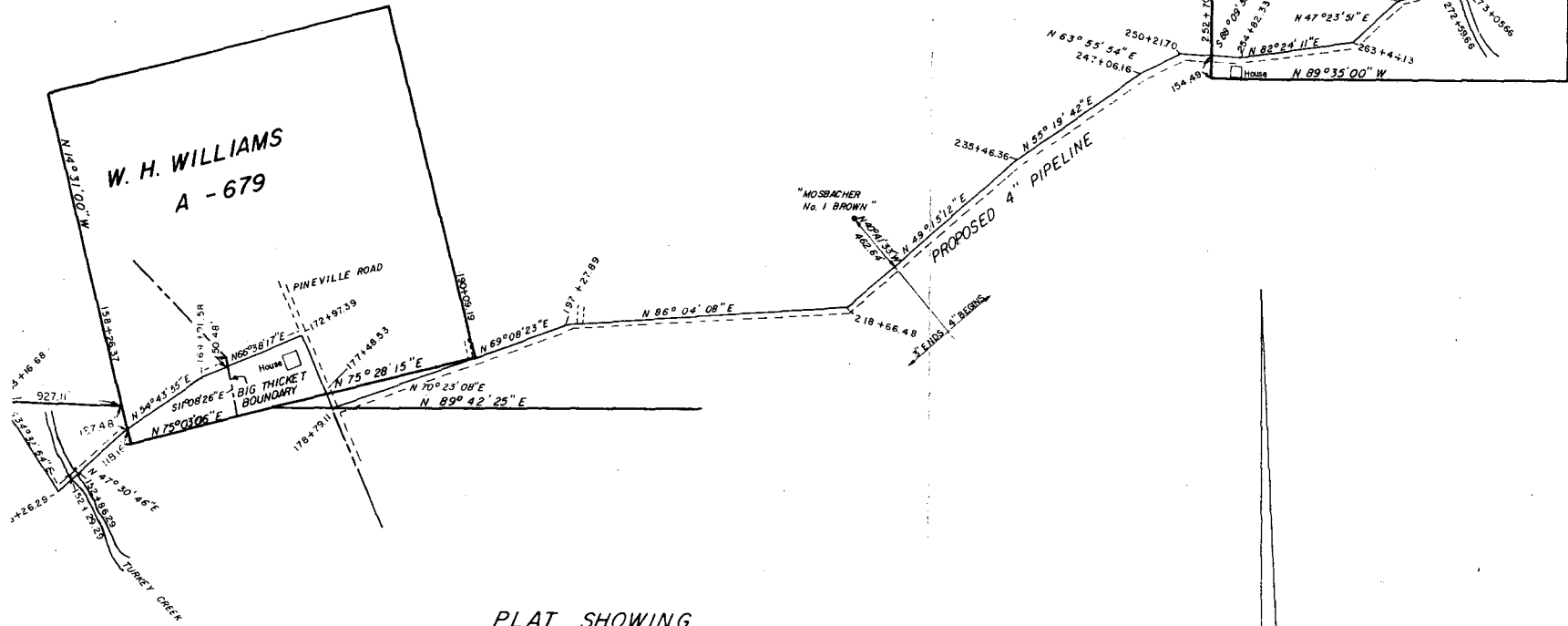
WILLIAM S.

A - 62

NATHANIEL H. HOVE  
A - 307



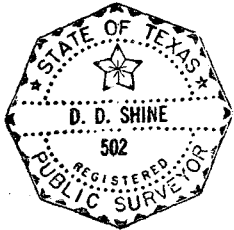
OWN



PLAT SHOWING  
**PROPOSED PIPELINE**  
 FOR  
**ROBERT MOSBACHER**

TYLER COUNTY, TEXAS

SURVEYED AUGUST, 1978, BY D. D. SHINE,  
 REGISTERED PUBLIC SURVEYOR No. 502  
 G.E. Mc. 8-11-78



*D. D. Shine*  
 D. D. SHINE

SCALE: 1" = 1000'

Mosbacher Production Co. Vol 4  
2100 Capital National Bank Building Pg 634  
1300 Main Street  
Houston, Texas 77002

August 14, 1978

Telephone  
713 654-0100

Commissioner James R. Jordan  
Precinct #4  
100 Courthouse  
Woodville, Texas 75979

Re: Our letter dated August 4, 1978 - Regarding  
West Hicksbaugh Area, Tyler County, Texas.

Dear Commissioner Jordan:

Following is an addendum to our Pipeline Right-of-Way letter of  
request, dated August 4, 1978, in reference to the above area.

The Operator will, at Operator's expense, lower line and case  
line if, in the future, where lines existent impede Tyler County,  
Texas' future activities.

Very truly yours,

MOSBACHER PRODUCTION COMPANY



Willie O'Brien  
Engineer

WO:lj



Vol 4 Pg 635

COUNTY TREASURER'S REPORT

FOR THE PERIOD ENDING

JULY 31, 1978

ON

RECEIPTS, DISBURSEMENTS AND CASH BALANCES

AUSTIN C. FULLER, COUNTY TREASURER

## BALANCES, RECEIPTS AND DISBURSEMENTS

Vol 4 Pg 636

All Funds

AUSTIN FULLER

Month Of July, 1978

COUNTY TREASURER

FUND	Cash On Hand 6-30-78	Receipts Present Month	Transfers In (Out)	Disbursements Current	Cash On Hand 7-31-78	Certificates of Deposit	Available Resources 7-31-78
General	47233.14	37277.74	-0-	32556.07	51954.81	225000.00	276954.81
Solid Waste	(10022.94)	110.29	-0-	195.86	(10108.51)	18000.00	7891.49
C & J-Permanent Improve.	(8281.27)	55.59	-0-	37.50	(8263.18)	9312.24	1049.06
Library	874.24	105.00	-0-	47.96	931.28	3794.81	4726.09
Capital Improvements	(22675.00)	-0-	-0-	1620.00	(24295.00)	95000.00	70705.00
General R & B #2	-0-	2596.80	(2596.80)	-0-	-0-	-0-	-0-
R & B #1	2179.86	223.23	322.00	4426.30	(1701.21)	28596.00	26894.79
R & B #2	10443.04	151.87	562.21	4345.43	6811.69	34278.50	41090.19
R & B #3	10629.84	1762.45	858.24	9951.20	3299.33	62584.50	65883.83
R & B #4	(3346.28)	221.73	854.35	7063.24	(9333.44)	60447.79	51114.35
County Wide ROW	1925.30	51.31	-0-	-0-	1976.61	28000.00	29976.61
General ROW I & S	(20936.74)	152.97	-0-	-0-	(20783.77)	29500.00	8716.23
ROW #1	-0-	-0-	-0-	-0-	-0-	-0-	-0-
ROW #2	314.25	-0-	-0-	-0-	314.25	-0-	314.25
ROW #3	-0-	-0-	-0-	-0-	-0-	-0-	-0-
ROW #4	267.12	-0-	-0-	-0-	267.12	7000.00	7267.12
Employees Savings	2605.00	527.00	-0-	119.00	3013.00	-0-	3013.00
Airport Maintenance	231.42	3.54	-0-	204.25	30.71	1000.00	1030.71
Anti-Recession Fiscal Assist.	3808.33	3670.00	-0-	700.00	6778.33	-0-	6778.33
State Cost #1	2264.50	887.50	-0-	2151.75	1000.25	-0-	1000.25
State Cost #2	235.00	297.00	-0-	-0-	532.00	-0-	532.00
Totals	17748.81	48094.02	-0-	63418.56	2424.27	602513.84	604938.11

# BALANCES, RECEIPTS AND DISBURSEMENTS

All Funds

*Vol 4 Pg 637*

AUSTIN FULLER

Month Of July, 1978

COUNTY TREASURER

	FUND	Cash On Hand 6-30-78	Receipts Present Month	Transfers In (Out)	Disbursements Current	Cash On Hand 7-31-78	Certifi- cates of Deposit	Available Resources 7-31-78
	Bank Statement Balance							5532.72
	Deposits In Transit							147.36
	Less Outstanding Checks							(3255.81)
	<b>Total Cash In Bank</b>							<b>2424.27</b>
	<b>Indebtedness:</b>							
	Solid Waste							20450.00
	Solid Waste							43666.00
	C & J-Permanent Improve.							20000.00
	General ROW I & S							24000.00
	R & B #1-Motor Grader							15000.00
	R & B #1-GMC Truck							6224.20
	R & B #1-Motor Grader							14000.00
	R & B #2-Motor Grader							17200.00
	R & B #2-GMC Truck							5491.00
	R & B #2-Ford Truck							9550.00
	R & B #3-Front End Loader							23000.00
	R & B #3-Motor Grader							38827.00
	<b>Total Indebtedness:</b>							<b>237408.20</b>
	<b>Tyler County Retirement</b>	2.15	7172.90	-0-	7172.90	2.15	-0-	2.15
	Bank Statement Balance							2.15
	Less Outstanding Checks							(-0-)
	<b>Total Cash In Bank</b>							<b>2.15</b>

# BALANCES, RECEIPTS AND DISBURSEMENTS

Vol 4 Pg 638

## All Funds

AUSTIN FULLER

Month Of July, 1978

COUNTY TREASURER

FUND	Cash On Hand 6-30-78	Receipts Present Month	Transfers In (Out)	Disbursements Current	Cash On Hand 7-31-78	Certifi- cates of Deposit	Available Resources 7-31-78
<b>Tyler County Payroll:</b>	14989.71	17372.19	-0-	-0-	(23286.36)	-0-	
General				39126.53			
Solid Waste				863.82			
R & B #1				2558.79			
R & B #2				3325.20			
R & B #3				4848.08			
R & B #4				4925.84			
<b>Totals for Payroll</b>	<u>14989.71</u>	<u>17372.19</u>	<u>-0-</u>	<u>55648.26</u>	<u>(23286.36)</u>	<u>-0-</u>	<u>(23286.36)</u>
Bank Statement Balance							2950.47
Less Outstanding Checks							(26236.83)
Total Cash In Bank							(23286.36)
*Please note that Cash Balances shown reflect a credit balance because of the difference in Payroll dates and Deposit dates at end of month.							
<b>Revenue Sharing:</b>	725.85	35452.00	-0-	-0-	20263.42	52993.08	73256.50
Jail Fund				1166.17			
Solid Waste				727.90			
R & B #1				3112.10			
R & B #2				2745.50			
R & B #3				-0-			
R & B #4				5880.00			
General				2282.76			
<b>Totals for Revenue Sharing</b>	<u>725.85</u>	<u>35452.00</u>	<u>-0-</u>	<u>15914.43</u>	<u>20263.42</u>	<u>52993.08</u>	<u>73256.50</u>

# BALANCES, RECEIPTS AND DISBURSEMENTS

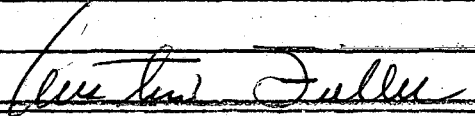
*Vol 4 Pg 639*

All Funds

AUSTIN FULLER

Month Of July, 1978

COUNTY TREASURER

FUND	Cash On Hand 6-30-78	Receipts Present Month	Transfers In (Out)	Disbursements Current	Cash On Hand 7-31-78	Certificates of Deposit	Available Resources 7-31-78
Revenue Sharing Continued--							
Bank Statement Balance							20363.42
Less Outstanding Checks							(100.00)
Total Cash In Bank							20263.42
Social Security Fund	46.55	19654.92	-0-	19609.32	92.15	-0-	92.15
Bank Statement Balance							92.15
Less Outstanding Checks							(-0-)
Total Cash In Bank							92.15
1977 HUD Grant	7991.28	-0-	-0-	1000.00	6991.28	-0-	6991.28
Bank Statement Balance							6991.28
Less Outstanding Checks							(-0-)
Total Cash In Bank							6991.28
Tyler County Escrow Account	-0-	79368.80	-0-	79366.00	2.80	79366.00	79368.80
Bank Statement Balance							2.80
Less Outstanding Checks							(-0-)
Total Cash In Bank							2.80
 Austin Fuller, County Treasurer							

Vol 4 Pg 640

WITNESS OUR HANDS, officially, this 14 day of

August

A.D., 1978.

Allen Sturrock  
County Judge

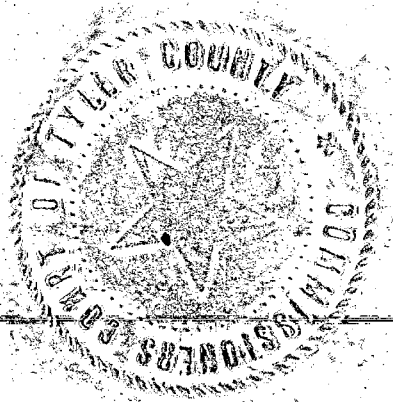
Maxie L. Riley  
Commissioner Pct. #1

HK Lowe  
Commissioner Pct. #2

Leon Fowler  
Commissioner Pct. #3

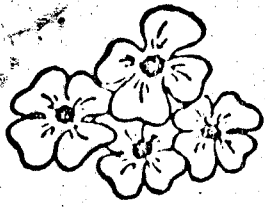
James R. Jordan  
Commissioner Pct. #4

SWORN TO AND SUBSCRIBED before me, by Allen Sturrock, County Judge, and Maxie L. Riley, Comm. Pct. #1, Kenneth Lowe, Comm. Pct. #2, Leon Fowler, Comm. Pct. #3, and James R. Jordan, Comm. Pct. #4, County Commissioners of Tyler County, Texas, each respectively, on this 14 day of August A.D., 1978.

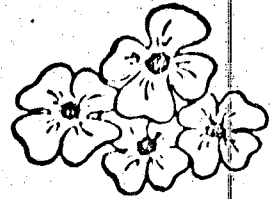


Warral Bestick  
Tyler County Clerk

By: \_\_\_\_\_  
Deputy



GRACE BOSTICK  
COUNTY CLERK  
TYLER COUNTY  
WOODVILLE, TEXAS 75979



*County of the Dogwood Festival*

August 22, 1978

(713) 283-2281

Hon. Warren G. Harding  
State Treasurer

*Vol 4 Pg 641*

Austin, Texas

The following resolution was passed by the Commissioner's Court, Tyler County, Texas, at a meeting held August 14, 1978 with all members being present.

"A motion was made by Commissioner Riley and seconded by Commissioner Lowe to adopt the following order; That the refund of \$28,193.70 to Tyler County, and upon receipt, will be used for Construction and Maintenance of County Lateral Roads and Bridges. It is a request of the Commissioner's Court, that these funds be returned to Tyler County. All voted yes and none no.

/S/ Judge Allen Sturrock  
Tyler County Judge

ATTEST: Grace Bostick  
Grace Bostick, Tyler County Clerk

THE STATE OF TEXAS  
COUNTY OF TYLER

I, Grace Bostick, Clerk in and for Tyler County, Texas,  
do hereby certify that the foregoing is a true and correct copy  
of the original as same appears of record in my office.

GIVEN under my hand and official seal, at office in  
Woodville, Texas, this 7 day of Sept 19 19 25

(L. S.)

*Grace Bostick*

Grace Bostick, County Clerk  
Tyler County, Texas

By \_\_\_\_\_  
Deputy



FILED FOR RECORD: 8-14-1978 at 4:07 o'clock P M  
DULY RECORDED: 9-21-1978 at 9:05 o'clock A M  
INSTRUMENT NO. \_\_\_\_\_ GRACE BOSTICK, TYLER CO. CLK.  
BY Grace Bostick Deputy

TYLER COUNTY COMMISSIONER'S COURT  
REGULAR MEETING  
AUGUST 14, 1978-----10:00 A.M.

*Vol. 1 Pg 124*  
*Vol 4 Pg 625*

The Regular Meeting of the Commissioner's Court, met on Monday August 14, 1978 at 10:00 A.M. All members being present. The meeting was opened with prayer by Commissioner James R. Jordan.

A motion was made by Commissioner Fowler and seconded by Commissioner Riley to table the Bids on the Tax Office Building, until August 15, 1978. All voted yes and none no.

A motion was made by Commissioner Jordan and seconded by Commissioner Riley to accept the Plat and Contract from Mosbacher Production Co. Houston, Texas 77002 for a Pipeline Easement in Pct. #4. All voted yes and none no. See attached.

A motion was made by Commissioner Riley and seconded by Comm. Fowler to give permission to the Airport Committee, to present a Tyler County Air Show, on Oct. 14 or Oct. 21, 1978. All voted yes and none no.

A motion was made by Commissioner Fowler and seconded by Comm. Lowe to approve the County Treasurer's Monthly Report. All voted yes and none no. See attached.

A motion was made by Commissioner Fowler and seconded by Comm. Riley to approve the County Extension Monthly Report. All voted yes and none no.

A motion was made by Commissioner Riley and seconded by Comm. Lowe to adopt the following order; That the refund of \$28,193.70 to Tyler County, and upon receipt, will be used for Construction and Maintance of County Lateral Roads and Bridges. It is a request of the Commissioner's Court, that these funds be returned to Tyler County. All voted yes and none no. See attached.

A motion was made by Commissioner Riley and seconded by Comm. Lowe to give permission to Terry Watts. for a Terminal Building to be built, but it must meet Airport Specifications. All voted yes and none no.

A motion was made by Commissioner Riley and seconded by Comm. Jordan to appoint County Judge Allen Sturrock to serve as a Board Member on the MHMR Board of Directors. This will be for a period of two years. All voted yes and none no.

Commissioner Fowler made the motion which was seconded by Comm. Lowe to set the Tax Ratio of Assessment to 35%. All voted yes and none no.

A motion was made by Commissioner Lowe and seconded by Comm. Fowler to solicit Bids for Air Conditioners for the downstairs offices. All voted yes and none no.

A motion was made by Commissioner Riley and seconded by Comm. Lowe to approve the Grant, for Tyler County Jail personnel. All voted yes and none no.

Vol. 1 Pg 125

Vol 4 Pg 626

There being no further business, the meeting adjourned.

SIGNED: Allen Sturrock Allen Sturrock, County Judge  
Maxie Riley Maxie Riley, Comm. Pct. #1  
H.K. Lowe H.K. Lowe, Comm. Pct. #2  
Leon Fowler Leon Fowler, Comm. Pct. #3  
James R. Jordan James R. Jordan, Comm. Pct #4  
ATTEST: Grace Bostick Grace Bostick, County Clerk

